

## Technical Data Sheet

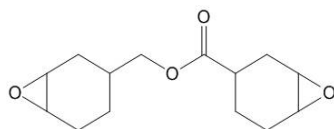
**Product Name:** Syna Epoxy 21  
*3,4-Epoxy cyclohexylmethyl-3,4-epoxy cyclohexanecarboxylate*

**CAS Number:** 2386-87-0

**EC Number:** 219-207-4

**Formula:** C<sub>14</sub>H<sub>20</sub>O<sub>4</sub>

**Structure:**



**Typical Properties:**

<b><u>Term</u></b>	<b><u>Specification</u></b>
Appearance	Colorless to pale-yellowish Liquid
Assay	>= 90%
Epoxy Equivalent Weight(Gm/Eq)	131 - 143
Color(Pt-Co)	<= 100
Viscosity @ 25°C (CPS)	300.0 - 450.0
Specific gravity @ 25°C	1.1670 - 1.1820
Package	20kgs/pail, 200kgs/Drum, and 1mt IBC Drum
Shelf Life	Two Years