

Technical Data Sheet

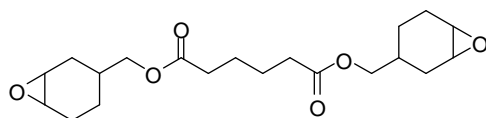
Product Name: Syna Epoxy 28E
Bis(3,4-Epoxy cyclohexylmethyl) adipate

CAS Number: 3130-19-6

EC Number: 221-518-5

Formula: C₂₀H₃₀O₆

Structure:



Typical Properties:

<u>Term</u>	<u>Specification</u>
Appearance	Colorless to Pale-Yellowish Liquid
Assay	>= 95%
Epoxy Equivalent Weight(Gm/Eq)	190 - 210
Color(Pt-Co)	<= 100
Viscosity @ 25°C (CPS)	400.0 - 750.0
Specific gravity @ 25°C	1.140 - 1.158
Total chloride (ppm)	<= 100
Package	20kgs/pail, 200kgs/Drum, and 1mt IBC Drum
Shelf Life	Two Years